



Registration Information

Meeting Overview

- Meet the Staff
- How to stay connected
- Upcoming Dates
- Rank One Forms
- Additional Items
- Band fees
- Registration Form

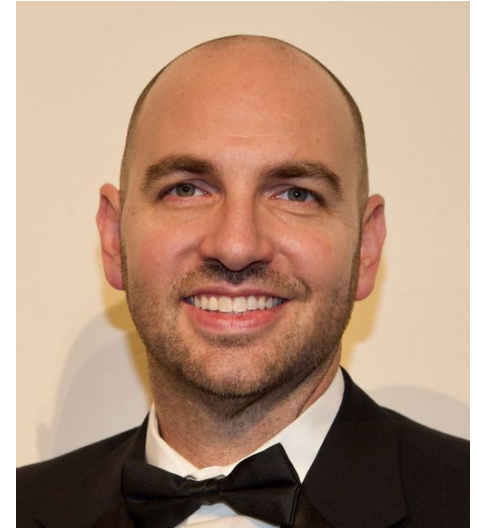
Band Directors



Gary Williams
Head Band Director



Connor Vaughn
Band Director



Michael Reed
Percussion Director

Staying Connected

Band Website - www.mnhsband.org

- Calendar
- Director contact information
- Booster contact information
- Volunteer information

TWIB Notes and Emails

- If you have NOT been receiving emails please email gawilliams@mckinneyisd.net

BAND App - Please join our Band Parent group in the BAND App. This is a great place to get reminders on upcoming events in the MNHS Band

1 -  Download the BAND app now

2 - Scan the QR code on the next slide

“MNHS Parent” BAND App Group

- All parents should join the main parent group called “MNHS New Band Parents”
- Please list First and Last Names
- Current parents who are already on main parent group do not need to sign up again



Upcoming Dates

May Mini Camp

- May 15-17 Spring Marching Camp (6-8 pm)
- May 31-June 2 Winds (8 am-4 pm)
- May 30-June 2 Percussion (Check Calendar for specifics)
- May 30-June 2 Color Guard (Check Calendar for specifics)

Summer Band Camp

- Color Guard - Starts July 18th
- Percussion - Starts July 19th
- Winds - Starts July 24th

School Schedule - August

Rehearsals beginning on July 31st will be for ALL Students (Winds/Guard/Percussion) combined. We will begin our normal weekly rehearsals in August, with additional Saturday rehearsals prior to the 8 hour rule taking effect. Please see the calendar.

Attendance at August rehearsals is crucial, as it is the first time we can begin learning the Drill for the show.

School Schedule - Weekly Rehearsals

We have a basic schedule that we will adhere to each week. However, please reference the calendar ahead of time as events such as Football Games, Show Days, and Stadium Rehearsals can change our weekly schedule

Weekly Rehearsal Schedule

- Monday - OFF
- Tuesday - 3:30 - 6:30
- Wednesday - 3:30 - 5:30
- Thursday - 3:30 - 6:30
- Friday - Typically football game days, but if that weeks game is on a Thursday, we will push our Thursday rehearsal to Friday.

Physicals

- Physicals are due no later than July 24, 2023.
- Can be scanned and emailed to Mr. Williams.
 - Please be sure you send to the correct Gary Williams, gawilliams@mckinneyisd.net
- Must be dated **AFTER** April 1st, 2023.

Additional Items

- **Marching Shoes - \$45** All Winds and Percussion Students
 - REQUIRED for Freshmen (sizing will be done at uniform fittings)
 - Returning students - if needed
 - Make sure your shoes fit and are in good condition
- **Polo Shirt (Required)- \$25** (Navy with embroidered band logo)
 - REQUIRED purchase for incoming students
 - Returning students - if needed
- **Hat/Visor (Required) \$20-** (Navy with embroidered two color band logo)
 - REQUIRED purchase for incoming students
 - Returning students - if needed
- **Show Shirt** - Please select size on registration form
 - Marching show themed t-shirt issued to all students in band fees

- **Meal Plan (OPTIONAL) - \$110**
 - Meals for Game Days
 - If your student is NOT on the Meal Plan, they will need to bring their own food to Home and Away Football Games
 - **Optional, but highly encouraged.** Most kids are on the meal plan
 - Examples of meals include but not limited to: Chick-Fil-A sandwiches, Jimmy Johns Subs, Raising Cane's Chicken, Pizza, McAlisters Deli

Band Fees

- Marching Band fee - \$650
- Concert Band fee - \$75
 - Not applicable for color guard only students
- Jazz Band Fee - \$75
- Winterguard Fees - Will be assessed in November
- Payment schedule
 - \$225 non refundable deposit due at registration
 - \$250 due July 1
 - \$250 due August 1 for band students (\$175 for color guard only students)
- Speak to a director if you need assistance with band fees or an extended payment plan
- Future band fee payments - invoices will be sent, and can be paid online directly through the invoice, send check/cash to PO box or turn into band director.

What Do These Fees Pay For?

JAZZ & CONCERT BAND

- Concert Band Clinicians
- Music
- Instrument Repairs (Rental Fee)
- Social Events
- Solo & Ensemble Contest
- TMEA Entry fees
- Festival Entry Fees

WINTER GUARD

- Choreo/Staging/Show Design
- Flags/Sabres/ Rifles
- Instructional Staff
- Food for contest days
- Contest Entry Fees

MARCHING BAND

- Music Copyright
- Custom Drill and Choreography for the show
- Custom Show Design
- Custom Uniforms
- Custom Music (winds and percussion)
- Sound Design
- Clinicians to work with the Band
- Food for students on competition days
- Prop building expenses
- Instructional Staff
- Color Guard Flags/Rifles/Sabres
- Contest Entry Fees
- Social Events

Registration Form Information

- Parent 1 email is where invoices will be sent.
- Select additional needed items: marching shoes, replacement polos, hats, meal plan.
- Select sizes for shirts, hat/visor choice (Marching Shoe sizing will be done during uniform fittings for anyone who purchases marching shoes).
- Option to pay first band fee only or full band fees. ***Refunds for students who drop will only be offered according to the Fee Schedule. (EX. Students who drop after the July 1 payment, will not receive money back for the Registration and July 1 installments)
- You will have the option to pay for the band fees, additional items and meal plan on the form directly with credit or debit card. You may also pay with check or cash in the lobby.
- **Even if you choose to pay with check/cash, please complete the form first and select band fees and additional items on the form.

Registration Forms

Accessible at: www.mnhsband.org - Registration Tab

STEP 1: Registration Jotform



STEP 2: UIL Acknowledgement



Rank One

MISD Required Forms

Must complete again for band even if you've already done this for athletics

- Forms are not available yet for fine arts. Links will be sent to parent emails for completion asap. The Rank One link will also be available on the MNHS Band Website under Registration.